

# Human IL-17A&F Protein

Cat. No. ILF-HM118

## Description

<b>Source</b>	Recombinant Human IL-17A&F Protein is expressed from HEK293 with His tag at the C-Terminus. It contains Gly24-Ala155(IL-17A)&Arg31-Gln163(IL-17F).
<b>Accession</b>	Q16552-1(IL-17A)&Q96PD4(IL-17F)
<b>Molecular Weight</b>	The protein has a predicted MW of 15.1 kDa (IL-17A) & 15.7 kDa (IL-17F). Due to glycosylation, the protein migrates to 16 kDa & 27 kDa based on Bis-Tris PAGE result.
<b>Endotoxin</b>	Less than 1EU per µg by the LAL method.
<b>Purity</b>	> 95% as determined by Bis-Tris PAGE > 95% as determined by HPLC

## Formulation and Storage

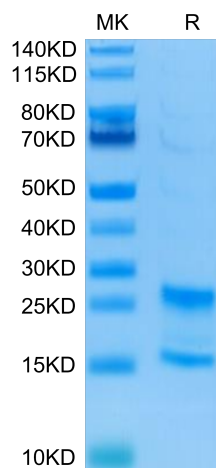
<b>Formulation</b>	Lyophilized from 0.22µm filtered solution in PBS (pH 7.4). Normally 8% trehalose is added as protectant before lyophilization.
<b>Reconstitution</b>	Centrifuge the tube before opening. Reconstituting to a concentration more than 100 µg/ml is recommended. Dissolve the lyophilized protein in distilled water.
<b>Storage</b>	-20 to -80°C for 12 months as supplied from date of receipt. -80°C for 3 months after reconstitution. Recommend to aliquot the protein into smaller quantities for optimal storage. Please minimize freeze-thaw cycles.

## Background

Interleukin17A (IL17A), also known as CTLA8, is a 1520 kDa glycosylated cytokine that plays an important role in antimicrobial and chronic inflammation. The six IL17 cytokines (IL17AF) are encoded by separate genes but adopt a conserved cystine knot fold. IL-17A is a ligand for IL17RA and IL17RC. The heterodimer formed by IL17A and IL17F is a ligand for the heterodimeric complex formed by IL17RA and IL17RC. Involved in inducing stromal cells to produce proinflammatory and hematopoietic cytokines.

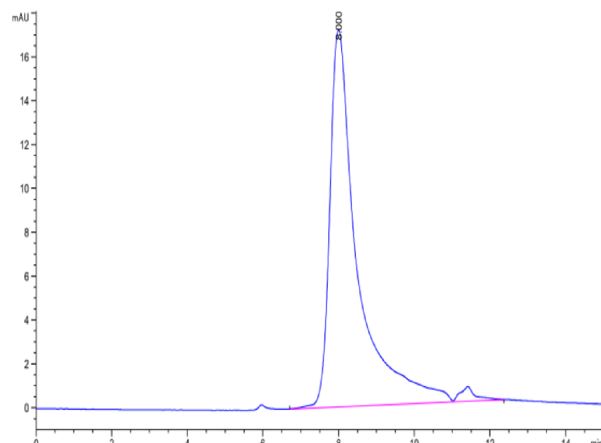
## Assay Data

### Bis-Tris PAGE



Human IL-17A&F on Bis-Tris PAGE under reduced conditions. The purity is greater than 95%

### SEC-HPLC



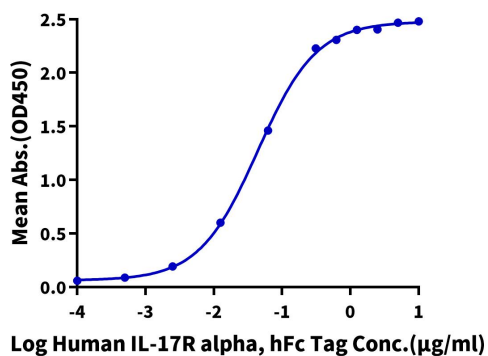
The purity of Human IL-17A&F is greater than 95% as determined by SEC-HPLC.

Assay Data

ELISA Data

**Human IL-17A&F, His Tag ELISA**

0.1µg Human IL-17A&F, His Tag Per Well

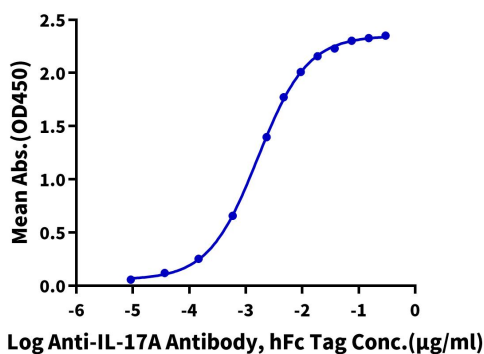


Immobilized Human IL-17A&F, His Tag at 1µg/ml (100µl/well) on the plate. Dose response curve for Human IL-17R alpha, hFc Tag with the EC50 of 44.1ng/ml determined by ELISA (QC Test).

ELISA Data

**Human IL-17A&F, His Tag ELISA**

0.5µg Human IL-17A&F, His Tag Per Well



Immobilized Human IL-17A&F, His Tag at 5µg/ml (100µl/well) on the plate. Dose response curve for Anti-IL-17A Antibody, hFc Tag with the EC50 of 1.6ng/ml determined by ELISA.